



STAINLESS STEEL FURNITURE

Catalogue of stainless steel furniture for health institutions and laboratories



Quality in the first place



protecting human health

MMM Group – Leader in Health Institutions Service Supplies

As from the date of its establishment in 1921, BMT Medical Technology s.r.o., the traditional manufacturer of sanitary engineering gradually turned from a small regionally oriented firm to an international company. In 1992 it became a member of the European MMM Group, operating in global markets just since 1954 and being an important supplier of systems in health service, science and research. Thanks to its complex offer of products and services, sterilization and disinfection equipment for hospitals, scientific institutions, laboratories and pharmaceutical industry, the MMM Group established itself as an excellent quality and innovation provider on global markets.

Individually Built Health Care Furniture

In 2000, based on our clients' wish we used our experience from our country and from abroad as well as our competence of a traditional manufacturer of sterilizers and we prepared new products for you – the modular assortment of stainless steel furniture. Shortly after being launched in the market, our furniture got really popular at professional public and it became an integral part of complex supplies of investment units. The assortment of the stainless steel furniture is extended every month based on specific requirements of our clients, nowadays containing more than 100 models and types. The furniture is suitable mainly for central sterilization units, sub-sterilization,

General and Actively Provable Quality

The quality system is based on process attitude principle as contained in EN ISO 9001 and EN ISO 13485 standards in compliance with Quality Policy of the Enterprise. Taking into consideration the permanent increase of requirements and needs of our clients and employees and changing conditions in the society, our prime aim is to implement and apply the TQM philosophy in all the fields of the company management.

Tradition and Quality of Work with Stainless Steel

Stainless steel ČSN 17240, DIN 1.4301, AISI 304 is the basic material for manufacture of furniture and accessories of sterilizers manufactured in BMT Medical Technology s.r.o. The high-quality material is designed mainly for products for health care system and food processing industry and it is supplied to BMT by top-class suppliers together with other materials, used for manufacture of BMT products. BMT has rich experience of over 90 years in stainless steel processing. One of the fields, where the experience is widely applied, is the manufacture of pressure vessels for steam sterilizers. Client in nearly all the countries of the world appreciate the quality of our products.

Full Service

One of the fields of maximal use of stainless steel furniture and stainless steel in general, is the equipment of central sterilization units. The BMT company arranges complete supplies of central sterilization on turn key. Majority of products supplied in this field carry the logo of BMT. Our company belong to top global class in the field of development, manufacture, supplies and full service of health care engineering and equipment in global markets.



tables and carts,
racks, carts,
cabinets, other,
atypical furniture
...

washing, packaging and preparation of material, sterile material warehouses, veterinary surgeries and labs, but it can also be successfully used even in kitchens and rooms for food preparation. Naturally, the furniture may be made to measure and atypical pieces may be supplied, like e.g. hatches, leading boxes or stainless steel partition walls.

MMM Group – perfection in laboratory and health care engineering.

Uncompromising Quality for Health Care Work Sites

Do you prefer your own solution?

We have done many concrete steps on our way of becoming a „solution provider“. Only our ability to understand the needs of our clients and relevant processes in their work with our products make possible for us to create and offer „made-to-measure“ solutions. The solution is based on complex satisfaction of individual requirements of clients based on professional service. We keep everyday dialogues by and between our clients and our traders on one side and development employees of BMT Medical Technology s.r.o. on the other side. Functional relations by and between design, equipment, concept of the product and work procedures, people and the environment are the base of our orientation towards the market.

We offer not only exactly defined types of products, but we also provide our clients with the possibility of making their own „made to measure“ product. We also offer our business services and consultancy in our field of business.

What do we offer to you?

BMT Medical Technology s.r.o. offers more than just modern products. Within the scope of open work dialogue, we can offer in finding solutions that will really satisfy your requirements. In brief: we go on. Our complex attitude will make your life easier and it will mean real advantages for you – productivity, high quality, related services and financial efficiency.

What will you get?

With our products, the users bet on reliable partners for any field of use. Our products are ideal for everyday operation use in health care service.

Sophisticated Construction Solution, Production Processing, Design

Progress in Processing

Simple and purposeful shapes and use of high quality and professionally processed materials together with practical surface treatment provide excellent functionality as well as highly positive aesthetic appearance and acknowledgements of users and experts.

Modular System

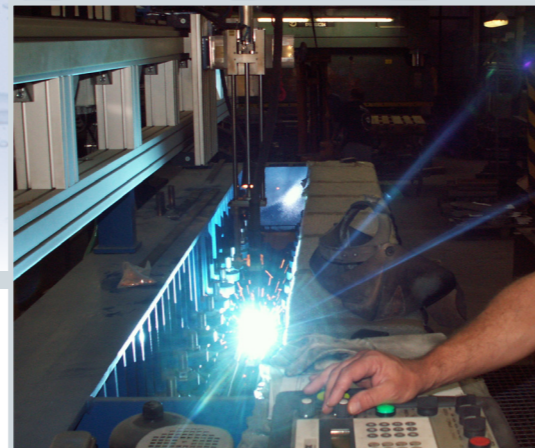
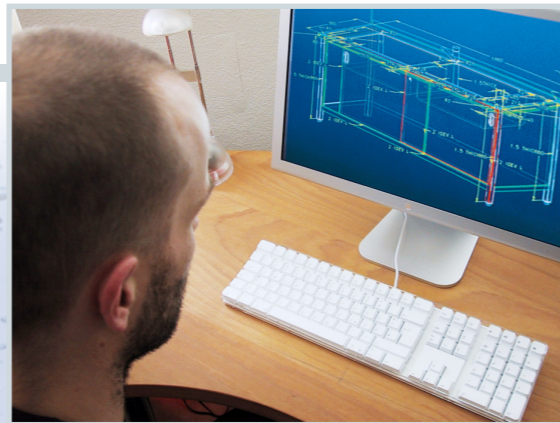
Modularity and modular principle based units are typical for products of BMT. They allow high flexibility in realization of individual clients' solutions, corresponding with specific conditions in given area and country. Knowledge and experience obtained in design as well as technical innovations permanently affect our design, construction and production. More, many patents, products trademarks and utility models guarantee high competency of our research and development work.

Client Service

We consider ourselves to be a partner of our clients. It is our top priority to implement the best solution from the point of view of technical perfection and efficiency in each project with individual requirements. Services and support of users are arranged in full extent by a network of own and contractually agreed authorized organizations all over the world.

Stainless Steel Bmt Furniture – a Unique Solution for Your Individual Requirements

- Top-class construction, quality and design
- More than 100 models and types
- Made-to-measure manufacture
- Optimal use of given space
- High quality materials and construction elements
- Complete services, including measuring, transport and assemblage



Tables and Carts

The offer of tables includes all the most frequently required models. The tables are made in standard module dimensions or based on individual requirements.

Work Table

The line of work tables is offered in standard depths of 400 up to 1 000 mm and widths of 600 up to 2 200 mm. Standard height of tables is 850 mm and it may be adjusted. The table board may be equipped with a rim, depending on its designation. The lower part of the table may remain free or it may be equipped with shelves or there may be placed a mobile box. For check of textiles, the tables may also be equipped with a glass board. Taking into consideration the ergonomics and easy cleaning and disinfection of surfaces, the work tables are suitable for all and any work sites in health care, laboratories and in community feeding.

Description:

- The table is equipped with adjusting screws on all the legs
- The work table is hardened and laminated chipboard
- In case of table length above 2 500 mm, the table has 6 legs.
- The table may be completed with a storage area in the rear part of the table and with the rear and side rim
- Rear legs with earthing screws

Material:

- Stainless steel DIN 1.4301



Table name / type	Dimensions			Loading capacity		
	Width [mm]	Depth [mm]	Height [mm]	Total [kg]	Shelf [kg]	Drawer [kg]
Work table	600	450	730	Max. 110	15	10
Work table	600	700	650	Max. 110	15	10
Work table	650	700	850	Max. 110	15	10
Work table	700	700	850	Max. 110	15	10
Work table	800	600	850	Max. 110	15	10
Work table	800	600	850	Max. 110	15	10
Work table	800	700	850	Max. 110	15	10
Work table	900	600	850	Max. 110	15	10
Work table	900	600	850	Max. 110	15	10
Work table	900	700	850	Max. 110	15	10
Work table	900	700	850	Max. 110	15	10
Work table	900	700	850	Max. 110	15	10
Work table	900	700	850	Max. 110	15	10
Work table	1000	600	850	Max. 110	15	10
Work table	1000	600	850	Max. 110	15	10
Work table	1000	700	850	Max. 110	15	10
Work table	1100	700	850	Max. 110	15	10
Work table	1150	700	850	Max. 110	15	10
Work table	1200	600	850	Max. 110	15	10
Work table	1200	700	850	Max. 110	15	10
Work table	1200	700	850	Max. 110	15	10

Table name / type	Dimensions			Loading capacity		
	Width [mm]	Depth [mm]	Height [mm]	Total [kg]	Shelf [kg]	Drawer [kg]
Work table	1200	700	900	Max. 110	15	10
Work table	1200	700	900	Max. 110	15	10
Work table	1200	800	850	Max. 110	15	10
Work table	1300	600	850	Max. 110	15	10
Work table	1300	700	850	Max. 110	15	10
Work table	1300	700	850	Max. 110	15	10
Work table	1400	600	850	Max. 110	15	10
Work table	1400	700	850	max. 110	15	10
Work table	1400	700	850	max. 110	15	10
Work table	1400	700	850	max. 110	15	10
Work table	1400	800	850	max. 110	15	10
Work table	1500	500	850	max. 110	15	10
Work table	1500	600	850	max. 110	15	10
Work table	1500	600	850	max. 110	15	10
Work table	1500	700	850	max. 110	15	10
Work table	1500	700	850	max. 110	15	10
Work table	1500	700	850	max. 110	15	10
Work table	1500	700	850	max. 110	15	10
Work table	1500	700	900	max. 110	15	10
Work table	1500	800	850	max. 110	15	10
Work table	1500	800	850	max. 110	15	10
Work table	1500	1000	850	max. 110	15	10
Work table	1600	500	850	max. 110	15	10
Work table	1600	600	850	max. 110	15	10
Work table	1600	600	850	max. 110	15	10
Work table	1600	700	850	max. 110	15	10
Work table	1600	700	850	max. 110	15	10
Work table	1600	700	850	max. 110	15	10
Work table	1600	700	850	max. 110	15	10
Work table	1600	700	850	max. 110	15	10
Work table	1600	700	850	max. 110	15	10
Work table	1600	700	900	max. 110	15	10
Work table	1600	800	850	max. 110	15	10
Work table	1600	800	890	max. 110	15	10
Work table	1700	700	850	max. 110	15	10
Work table	1800	600	850	max. 110	15	10
Work table	1800	600	850	max. 110	15	10
Work table	1800	700	850	max. 110	15	10
Work table	1800	700	850	max. 110	15	10
Work table	1800	800	850	max. 110	15	10
Work table	1800	800	850	max. 110	15	10
Work table	1800	800	850	max. 110	15	10
Work table	1900	500	850	max. 110	15	10
Work table	1900	700	850	max. 110	15	10
Work table	1900	800	850	max. 110	15	10
Work table	1900	800	850	max. 110	15	10
Work table	2000	500	850	max. 110	15	10
Work table	2000	600	850	max. 110	15	10
Work table	2000	700	850	max. 110	15	10
Work table	2000	700	850	max. 110	15	10
Work table	2000	700	850	max. 110	15	10
Work table	2000	800	850	max. 110	15	10
Work table	2000	800	850	max. 110	15	10
Work table	2000	1000	850	max. 110	15	10
Work table	2000	1400	900	max. 110	15	10
Work table	2200	500	850	max. 110	15	10

Set Table

The line of set tables is offered in standard depths of 700 up to 1 400 mm and widths of 1 200 up to 1 500 mm. Standard height of tables is 850 mm and it may be adjusted. The tables may be equipped – depending on their designation – with units for ergonomic packaging of containers or with an extension with shelves. The lower part of the table may remain free or it may be equipped with shelves or there may be placed a mobile box. The offer also includes small movable storage tables. Taking into consideration the ergonomics and easy cleaning and disinfection of surfaces, the set tables are suitable mainly for sterilization units.

Description:

- The work table is hardened and laminated chipboard
- The table is equipped with adjusting screws on all the legs
- Rear legs with earthing screws
- Setting gallery
- Suspension hooks
- Chest of drawers
- Built-in lighting
- Special rear wall „Karbonex“

Material:

- Stainless steel DIN 1.4301



Table name / type	Dimensions			Loading capacity		
	Width [mm]	Depth [mm]	Height [mm]	Total [kg]	Shelf [kg]	Drawer [kg]
Set table	1200	700	850(1351)	max. 110	15	10
Set table	1200	700	900(1401)	max. 110	15	10
Set table	1500	700	850(1351)	max. 110	15	10
Set table with a gallery	1500	700	850(1351)	max. 110	15	10
Set table with a gallery	1500	700	850(1351)	max. 110	15	10
Set table	1500	800	850(1351)	max. 110	15	10
Set table	1500	800	850(1351)	max. 110	15	10
Set table	1500	800	850(1351)	max. 110	15	10
Set table	1500	1000	850(1351)	max. 110	15	10
Set table	1600	700	850(1351)	max. 110	15	10
Set table	1700	700	850(1351)	max. 110	15	10
Set table	1800	700	850(1351)	max. 110	15	10
Set table	1800	800	850(1351)	max. 110	15	10
Set table	1800	800	850(1351)	max. 110	15	10
Set table	1800	800	850(1351)	max. 110	15	10
Set table	1800	800	850(1351)	max. 110	15	10
Set table	1900	700	850(1351)	max. 110	15	10
Complete set table	1900	700	850(1351)	max. 110	15	10
Set table	1900	800	750(1251)	max. 110	15	10
Set table	1900	800	850(1351)	max. 110	15	10
Set table	2000	800	850(1351)	max. 110	15	10
Set table with a gallery	2400	700	900(1401)	max. 110	15	10
Two set tables	2000	1400	900(1401)	max. 110	15	10
Two set tables	2000	1400	900(1401)	max. 110	15	10
Two set tables with a gallery	1500	1400	850(1351)	max. 110	15	10
Set table lighting (1 pc)	-	-	-	max. 110	15	10
Set table lighting (2 pc)	-	-	-	max. 110	15	10

Washing Table

The line of washing tables is offered in standard depths of 515 up to 800 mm and widths 860 up to 2 300 mm. Standard height of tables is 850 mm and it may be adjusted. The table boards may be equipped with a rim, depending on their designation. The lower part of the table may remain free or it may be equipped with shelves or storage boxes respectively equipped with doors. The size and number of sinks, the type and placement of piping fittings are solved individually. Taking into consideration the ergonomics and easy cleaning and disinfection of surfaces, the washing tables are suitable for all and any work sites in health care, laboratories and in community feeding.

Description:

- The work table is hardened and laminated chipboard
- The table is equipped with adjusting screws on all the legs
- Large sink - dimensions 700 × 450 × 280 mm
- Small sink - dimensions 450 × 450 × 280 mm
- Rear legs with earthing screws

Material:

- Stainless steel DIN 1.4301



Table name / type	Dimensions			Loading capacity	
	Width [mm]	Depth [mm]	Height [mm]	Total [kg]	Shelf [kg]
Washing table	860	515	900	max. 110	15
Washing table	1000	600	850	max. 110	15
Washing table	1000	700	850	max. 110	15
Washing table	1000	700	900	max. 110	15
Washing table	1200	600	850	max. 110	15
Washing table	1200	700	850	max. 110	15
Washing table	1200	700	850	max. 110	15
Washing table	1400	700	850	max. 110	15
Washing table	1400	700	850	max. 110	15
Washing table	1500	700	850	max. 110	15
Washing table	1500	700	850	max. 110	15
Washing table	1500	700	850	max. 110	15
Washing table	1500	700	850	max. 110	15
Washing table	1500	700	850	max. 110	15
Washing table	1600	600	850	max. 110	15
Washing table	1600	700	850	max. 110	15
Washing table	1700	700	850-900	max. 110	15
Washing table	1800	700	850	max. 110	15
Washing table	1900	700	850	max. 110	15
Washing table - atypical	1900	700	850	max. 110	15
Washing table	1900	700	900	max. 110	15
Washing table	1900	700	900	max. 110	15
Washing table	1900	800	850	max. 110	15
Washing table	2000	700	850	max. 110	15
Washing table	2000	700	850	max. 110	15
Washing table	2000	700	850-900	max. 110	15
Washing table	2000	800	1100	max. 110	15

Table name / type	Dimensions			Loading capacity	
	Width [mm]	Depth [mm]	Height [mm]	Total [kg]	Shelf [kg]
Washing table	2200	700	900	max. 110	15
Washing table	2300	700	850-900	max. 110	15
Washing table	2350	700	850	max. 110	15
Washing table	2400	700	900	max. 110	15
Washing table	2400	700	900	max. 110	15
Washing table	2400	700	900	max. 110	15
Washing table	2450	700	850	max. 110	15
Washing table	2500	700	850	max. 110	15
Washing table	2400	700	900	max. 110	15

Movable Instrumentation Table

The movable instrumentation table made of stainless steel, with storage area of 430 x 350 mm. Its height is easily adjustable from 100 to 130 cm, ergonomic design with four castors. It is designed for placement of surgery tools and medical material.

Description:

- 4x braked castor
- The table is revolving and height-adjustable

Material:

- Stainless steel DIN 1.4301



Table name / type	Dimensions			Loading capacity	
	Width [mm]	Depth [mm]	Height [mm]	Total [kg]	Shelf [kg]
Mobile instrumentation table	stolek 430	350	1000-1300	5	

Illuminating Table

The line of illuminating tables is offered in standard depths of 1 000 mm and widths of 1 800 up to 2 400 mm. Standard height of tables is 850 mm. Taking into consideration the ergonomics and easy cleaning and disinfection of surfaces, the tables are suitable mainly for sterilization work sites.

Description:

- The desktop is hardened and laminated chipboard
- The table is equipped with adjusting screws on all the legs
- Rear legs with earthing screws
- Easily detachable built-in lighting

Material:

- Stainless steel DIN 1.4301



Table name / type	Dimensions			Loading capacity	
	Width [mm]	Depth [mm]	Height [mm]	Total [kg]	Shelf [kg]
Illuminating table	1800	1000	850		15
Illuminating table	2000	1000	850		15
Illuminating table	2400	1100	900		15



The offer of racks and shelves includes all and any most frequently required models of standing and mobile racks. The racks and shelves are manufactured in standard module dimensions or according to an individual order. The design guarantees ergonomic work of the staff and easy cleaning and disinfection.

Rack

The line of stainless steel racks is offered in standard depths of 400 up to 600 mm and widths of 700 up to 2 000 mm. The usual height of racks is 1800 mm. Taking into consideration the ergonomics and easy cleaning and disinfection of surfaces, the racks are suitable for all and any work sites in health care, laboratories and in community feeding.

Description:

- Basic height: 1 800 mm
- The rack is equipped with adjusting screws on all the legs
- 4 non-adjustable shelves
- Rear legs with earthing screws

Material:

- Stainless steel DIN 1.4301



Table name / type	Dimensions			Loading capacity	
	Width [mm]	Depth [mm]	Height [mm]	Total [kg]	Shelf [kg]
Rack	700	600	1800	250	100
Rack	1000	400	1800	250	100
Rack	1000	500	1800	250	100
Rack	1000	600	1800	250	100
Rack	1100	400	1800	250	100
Rack	1200	600	1800	250	100
Rack	1500	500	1800	250	100
Rack	1600	400	1800	250	100
Rack	1600	600	1800	250	100
Rack	1700	400	1800	250	100
Rack	1700	500	1800	250	100
Rack	1700	600	1800	250	100
Rack	2000	400	1800	250	100
Rack	2000	500	1800	250	100

Folding Rack

The line of stainless steel racks is offered in standard depths of 400 up to 700 mm and widths of 600 up to 1 500 mm. The usual height of racks is 1800 mm. Taking into consideration the ergonomics and easy cleaning and disinfection of surfaces, the racks are suitable for all and any work sites in health care, laboratories and in community feeding.

Description:

- The rack is a set of racks stands connected by shelves and fastened with cross bracing
- One field width: 600 - 1 500 mm
- Rack height: 1 800 mm
- The rack is equipped with adjusting screws on all the legs

Material:

- Stainless steel DIN 1.4301



Table name / type	Dimensions			Loading capacity	
	Width [mm]	Depth [mm]	Height [mm]	Total [kg]	Shelf [kg]
Folding rack	600	400	1800	120	30
Folding rack	800	400	1800	120	30
Folding rack	900	500	1800	120	30
Folding rack	900	600	1800	120	30
Folding rack	1000	500	1800	120	30
Folding rack	1000	600	1800	120	30
Folding rack	1100	500	1800	120	30
Folding rack	1100	600	1800	120	30
Folding rack	1200	400	1800	120	30
Folding rack	1200	500	1800	120	30
Folding rack	1200	700	1800	120	30
Folding rack	1300	500	1800	120	30
Folding rack	1400	400	1800	120	30
Folding rack	1400	500	1800	120	30
Folding rack	1400	600	1800	120	30
Folding rack	1500	400	1800	120	30
Folding rack	1500	500	1800	120	30
Special rack	1000	500	1800	250	50
Combined rack	1000	600	1800	120	30

Mobile Rack

The line of mobile racks allows optimal and flexible use of space and stored material handling. Taking into consideration the ergonomics and easy cleaning and disinfection of surfaces, the mobile racks are suitable for all and any work sites in health care and in laboratories.

Description:

- Antistatic castors, diameter 125 mm, 2x with a brake
- Maximal loading capacity of the unit is 35 kg
- The spacing of mouldings can be height-adjusted in the steps of 150 mm

Material:

- Stainless steel DIN 1.4301



Table name / type	Dimensions			Loading capacity	
	Width [mm]	Depth [mm]	Height [mm]	Total [kg]	Shelf [kg]
Mobile rack	1000	600	1600	200	60
Mobile container rack	705	620	1115	210	
Mobile container rack	1035	620	1352	300	
Mobile container rack	1035	620	2015	300	

Carts

The offer of carts includes the most frequently required types of mobile carts and boxes. The design guarantees ergonomic work of the staff and easy cleaning and disinfection.

Storage Cart

The line of stainless steel storage carts is offered in standard heights of 800 mm up to 950 mm.

Description:

- Antistatic castors, diameter 125 mm, 2x with a brake
- Maximal loading capacity is 60 kg

Material:

- Stainless steel DIN 1.4301



Table name / type	Dimensions			Loading capacity	
	Width [mm]	Depth [mm]	Height [mm]	Total [kg]	Shelf [kg]
Storage cart	450	400	800	60	30
Storage cart	450	400	800	60	30
Storage cart	700	500	850	60	30
Storage cart	700	525	950	60	30
Storage cart	1000	650	850	60	30
Storage cart	1000	650	850	60	30
Storage cart	1000	650	900	60	30

Mobile Box

Stainless steel mobile box with drawers.

Description:

- Antistatic castors, diameter 125 mm, 2x with a brake
- Maximal loading capacity is 80 kg

Material:

- Stainless steel DIN 1.4301



Table name / type	Dimensions			Loading capacity	
	Width [mm]	Depth [mm]	Height [mm]	Total [kg]	Shelf [kg]
Mobile Box	500	620	708	80	
Mobile Box	500	620	708	80	

Container Cart

Dust-tight transport carts.

Description:

- Antistatic castors, diameter 125 mm, 2x with a brake
- Maximal loading capacity is 200 kg
- Maximal loading capacity of the unit is 35 kg
- Simple door with a lock

Material:

- Stainless steel DIN 1.4301



Table name / type	Dimensions			Loading capacity	
	Width [mm]	Depth [mm]	Height [mm]	Total [kg]	Shelf [kg]
Container cart. Dust-tight	759	661	1246	150	35
Container cart. Dust-tight	759	661	1254	150	35
Container cart. Dust-tight - light	759	663	1237	150	
Container cart. Dust-tight	759	690	1250	150	
Container cart. Dust-tight	829	690	1161	200	
Container cart. Dust-tight	950	804	800	75	35
Container cart. Dust-tight	1120	740	1020	200	



Other Carts

This category includes all the other types of carts – mainly the atypical ones. The most frequently required and supplied are handling carts of various types. Modern design and materials and components use guarantee ergonomic work of the staff and easy cleaning and disinfection.

Material:

- Stainless steel DIN 1.4301



Table name / type	Dimensions			Loading capacity	
	Width [mm]	Depth [mm]	Height [mm]	Total [kg]	Shelf [kg]
Pc cart	750	650	1065		
Tv cart	600	550	1250		
Baskets cart	620	580	1515	60	10
Linen cart	1063	544	910		
Linen cart	910	544	1063		
Transport trolley	710	340	850		
Movable stand	500	500	1413		
Movable stand	1460	460	1040		
Movable stand	1484	460	1040		



The offer of cabinets includes all the most frequently required models of hanging cabinets. The cabinets are manufactured in standard module dimensions or according to individual requirements. The design of the cabinets guarantees ergonomic work of the staff and easy cleaning and disinfection.

Hanging Cabinet

The complex lines of hanging cabinets are offered in standard depths of 300 up to 400 mm and widths 700 up to 1 500 mm. Standard height of cabinets with two shelves is 650 mm. The cabinets may be open or closable with doors, depending on their designation. Taking into consideration the ergonomics and easy cleaning and disinfection of surfaces, the hanging cabinets and shelves are suitable for all and any work sites in health care, laboratories and in community feeding.

Description:

- The cabinet is hanging on the wall, using a moulding.
- The shelf is height-adjustable.

Material:

- Stainless steel DIN 1.4301

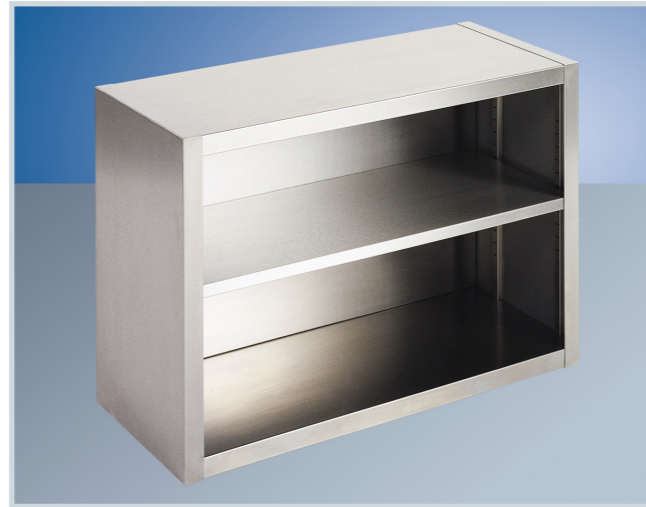


Table name / type	Dimensions			Loading capacity	
	Width [mm]	Depth [mm]	Height [mm]	Total [kg]	Shelf [kg]
Hanging cabinet	700	400	650		
Hanging cabinet	950	400	650		15
Hanging cabinet	1000	300	650		
Hanging cabinet	1000	400	650		
Hanging cabinet	1200	300	650		
Hanging cabinet	1200	350	650		
Hanging cabinet	1300	400	650		15
Hanging cabinet	1500	300	650		
Hanging cabinet	1500	400	650		15
Hanging cabinet with doors	1200	350	650		15
Hanging cabinet with doors	1500	350	650		15
Hanging cabinet with doors	1500	350	650		15



... high quality guarantee

Other Atypical Furniture

This category includes all the other types of furniture, mainly atypical furniture. Modern design and materials and components use guarantee ergonomic work of the staff and easy cleaning and disinfection.

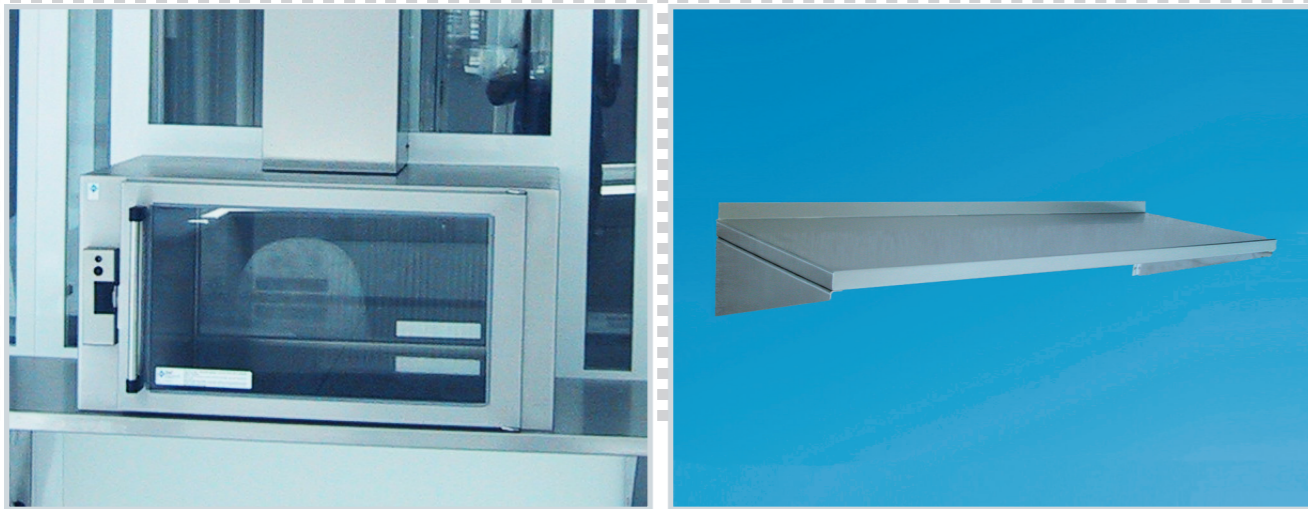
Complete equipment of the central sterilization unit, laboratories or community feeding units requires even some atypical pieces of furniture. The requirements are usually set by a specific character of activity or by work processes.

Use our offer and let us manufacture your atypical pieces of furniture.

The most frequently required and supplied ones are:

- Supply windows of stainless steel
- Interlaying boxes
- Stainless steel waste bins
- Stainless steel folding table
- Travelling box
- ...

Table name / type	Dimensions			Loading capacity	
	Width [mm]	Depth [mm]	Height [mm]	Total [kg]	Shelf [kg]
Supply box	755	919	741		
Supply box	995	792	597		
Left bracket	60	395	470		
Right bracket	60	395	470		
Hatch	745	159	1130		
Hatch	900	159	1690		
Hatch	1000	159	1690		
Sill	743				
Sill	898				
Sill	998				
Sill	998				
Wall for baskets	480		1710		
Partition	900	56,5	1600		
Stand	900	620	50		
Eaves shelf	900	350	600		
Mobile stand	500	500	1413		
Mobile stand	1460	460	1040		
Mobile stand	1484	460	1040		



Cleaning and Disinfection Means by Dr. Weigert

Mechanical cleaning and disinfection procedures in service and industry appeared in connection with technical progress at the beginning of the 20th century.

The company Dr. Weigert became a part of the process at its very beginning in 1912. The permanently improved means and cleaning concepts of the company Dr. Weigert – developed in close co-operation with leading companies in the field of washing, cleaning and disinfection equipment – used to be and they are the best brand for the best results that easily meet international hygienic, safety and technical requirements.

Dr. Weigert & MMM Group

The companies Dr. Weigert and Münchener Medizin Mechanik – MMM Munich, the founder of the MMM-Group, have closely co-operated for decades in the field of methods of mechanical washing, cleaning and disinfection in the field of health care, laboratories and gastronomy. On the basis of the co-operation there have already been developed many new devices of the company MMM with dosing equipment and application means of the company Dr. Weigert. Optimal symbiosis of manufacturing processes technology, based on tradition and common aims, represents a solid and reliable base with full range of services for clients all over the world.

Health Care and Laboratories

The wide range of activities of the company Dr. Weigert does not contain any more hygienically sensitive field but this one. Taking into consideration strict hygienic – safety criteria, it is characterised by a small manoeuvring space. And exactly this field became the decisive one for the company Dr. Weigert on global basis. Based on co-operation with partners in the field of washing equipment and devices manufacture, the company developed and continuously improves the mechanical processing of health care and laboratory tools and equipment. The company keeps top-class global level in the field of disinfection and cleaning for a long time. The position was reached thanks to high quality products, safety and efficiency of use as well as thanks to specialisation in care for material, which are the tools made of, and so the prolongation of their service life as well.

Gastronomy

Many requirements are imposed on dishes and utensils washers installed in community feeding kitchens. While excluding hygienic risks it is necessary to be aware of the fact that optically clean dishes and cutlery does not have to be hygienically clean. So as to meet the requirements, the chemically and technically qualified employees of the company Dr. Weigert perform permanent optimisation of hygienic procedures taking into consideration client's requirements so as to meet any strict requirements towards kitchen hygiene in the future. They prove in practice their professional knowledge, which you can rely on.



... we head for your individual requirements



More information
is available direct from
our internet web site

www.bmt.cz

Make acquaintance with our further offers...



Small steam sterilizers 15-25l



Steam sterilizers 140-1490l



Laboratory drying ovens and incubators 22-707l



Formaldehyde sterilizer 110l



Cleaning and disinfection agents

To protect, treat and lubricate the stainless steel surfaces, we recommend you the special products **neoblank** or **neoblank Spray**. The products are sprayed evenly on the stainless steel surface and polished by a smooth cloth. The surface is evenly clean and semi-bright, without any finger-prints, smears or stains. To clean stubborn stains off the stainless steel surface thoroughly, **neodisher sol** is recommended. **neodisher sol** is a cleaning dispersion which removes efficiently the scale, grease and other dirt difficult to remove. The use of such special products will markedly improve the stainless steel products appearance and will extend their life. Use the following contacts to get more information about the products.



youtube.com/bmtbrno



facebook.com/bmt.cz



BMT Medical Technology s.r.o., Cejl 157/50, Zábřovice, CZ 602 00 Brno
Tel.: +420 545 537 111, fax: +420 545 211 750, e-mail: mail@bmt.cz, www.bmt.cz